

Technical Data Sheet

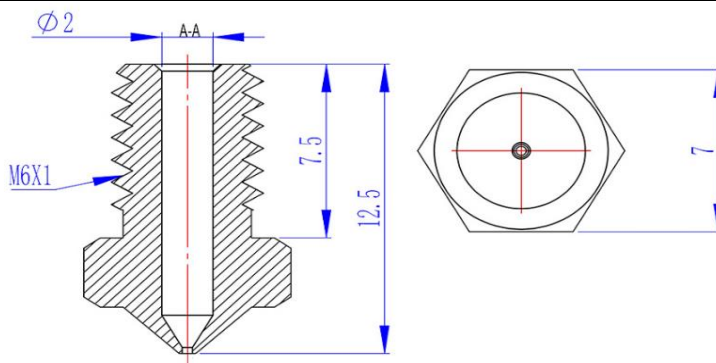


10/23 - V1.0

20-V560BR

SIUTEC V5/V6 PREMIUM Nozzle - 1.75mm

Brass



Features

High Thermal Conductivity: Rapid heat-up and consistent temperature.

Precision Machining: Accurate and smooth nozzle geometries.

Lightweight: Reduces wear on printer movement systems.

Corrosion Resistant: Durable in varied environments.

Cost-Effective: Economical compared to hardened steel or tungsten.

Printer List

Prusa i3, Anycubic i3 Mega S, Anycubic Chiron, Anycubic 4MAX, Anycubic Vyper, Anycubic Kobra, Anycubic Kobra Max, E3D V5 Hotend, E3D V6 Hotend

Product Specifications

Filament diameter	1.75mm
Nozzle diameter	0.2/0.3/0.4/0.5/0.6/0.8/1.0mm
Size	12.5x7mm
Thread	M6
Material	brass
Tolerance	± 0.01mm
Maximum Printing Temperature	300°C
Hardness (Mohs)	3
Thermal Conductivity	105 W/mK
Expansion Coefficient	18 µm/m*T

Applicable Materials

PLA, PLA+, ABS, TPU,PA, etc